

DATE:

EXP. DATE:

REVISIONS

REV # DATE: REV. PER:

DATE:  
05-17-17

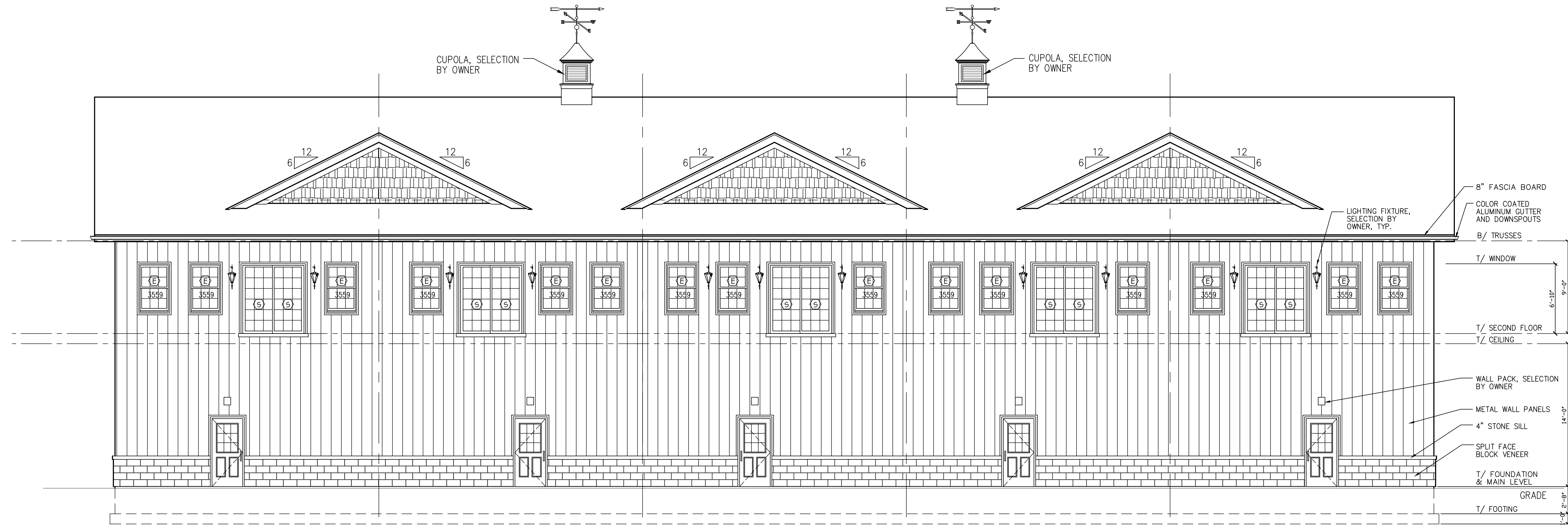
DRAWN BY: MES

PREVIOUS NO.

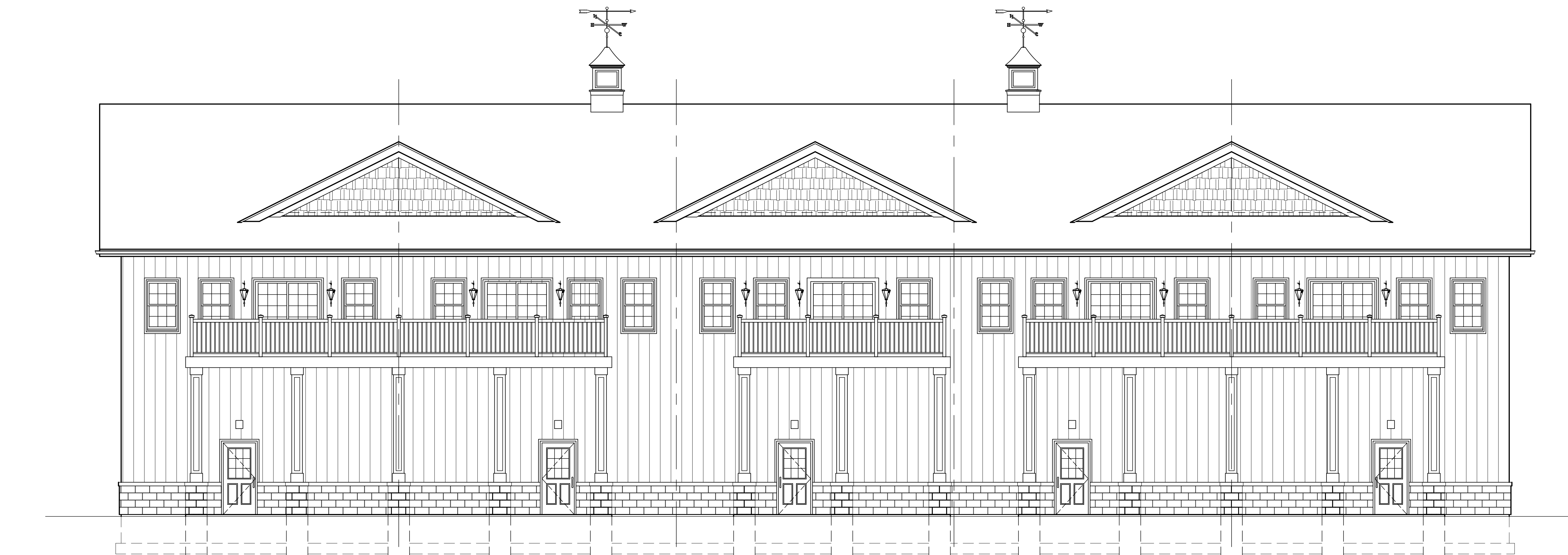
PROJECT NO.  
17049

SHEET NUMBER

A-1



**EAST ELEVATION (WITHOUT DECK)**  $3/16" = 1'-0"$



**EAST ELEVATION (WITH DECK)**  $3/16" = 1'-0"$

**FIVE UNIT CONDO BUILDING**  
**AUTOBAHN COUNTRY CLUB**  
**3795 CENTERPOINT WAY, JOLIET,**  
**ILLINOIS 60439**

DATE:

EXP. DATE:

REVISIONS

REV # DATE: REV. PER:

DATE:  
05-17-17

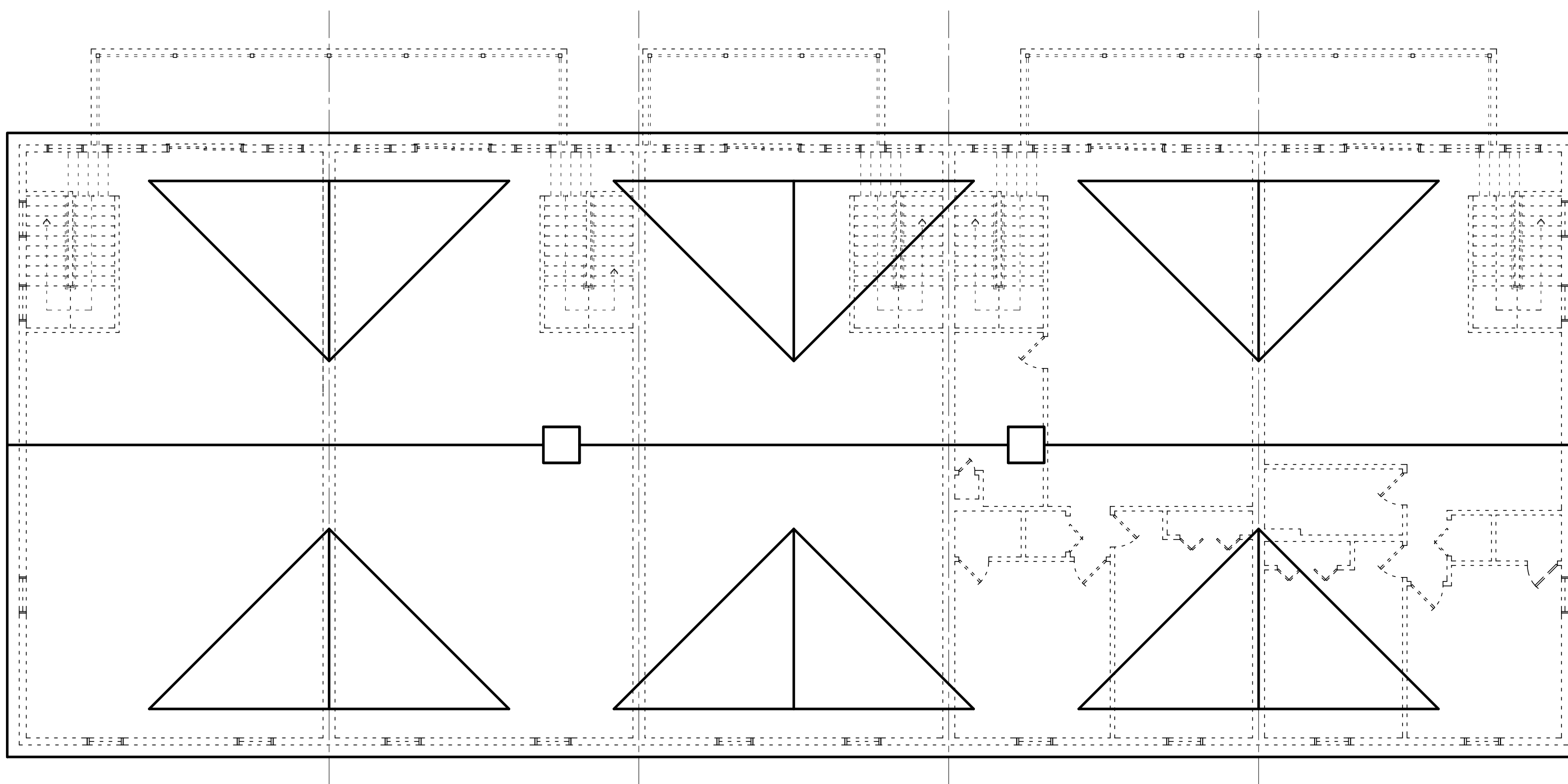
DRAWN BY: MES

PREVIOUS NO.

PROJECT NO.  
17049

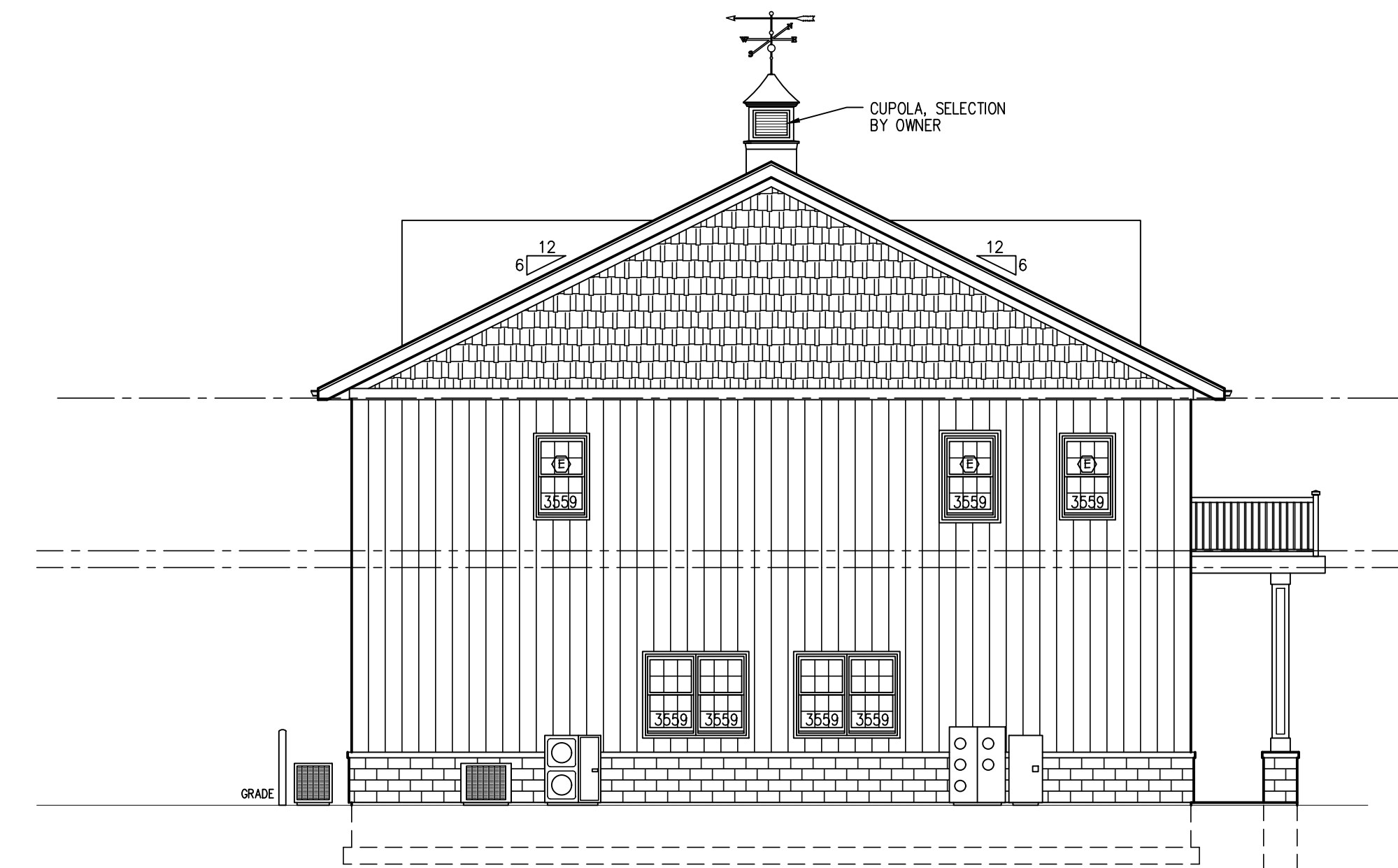
SHEET NUMBER

**A-2**



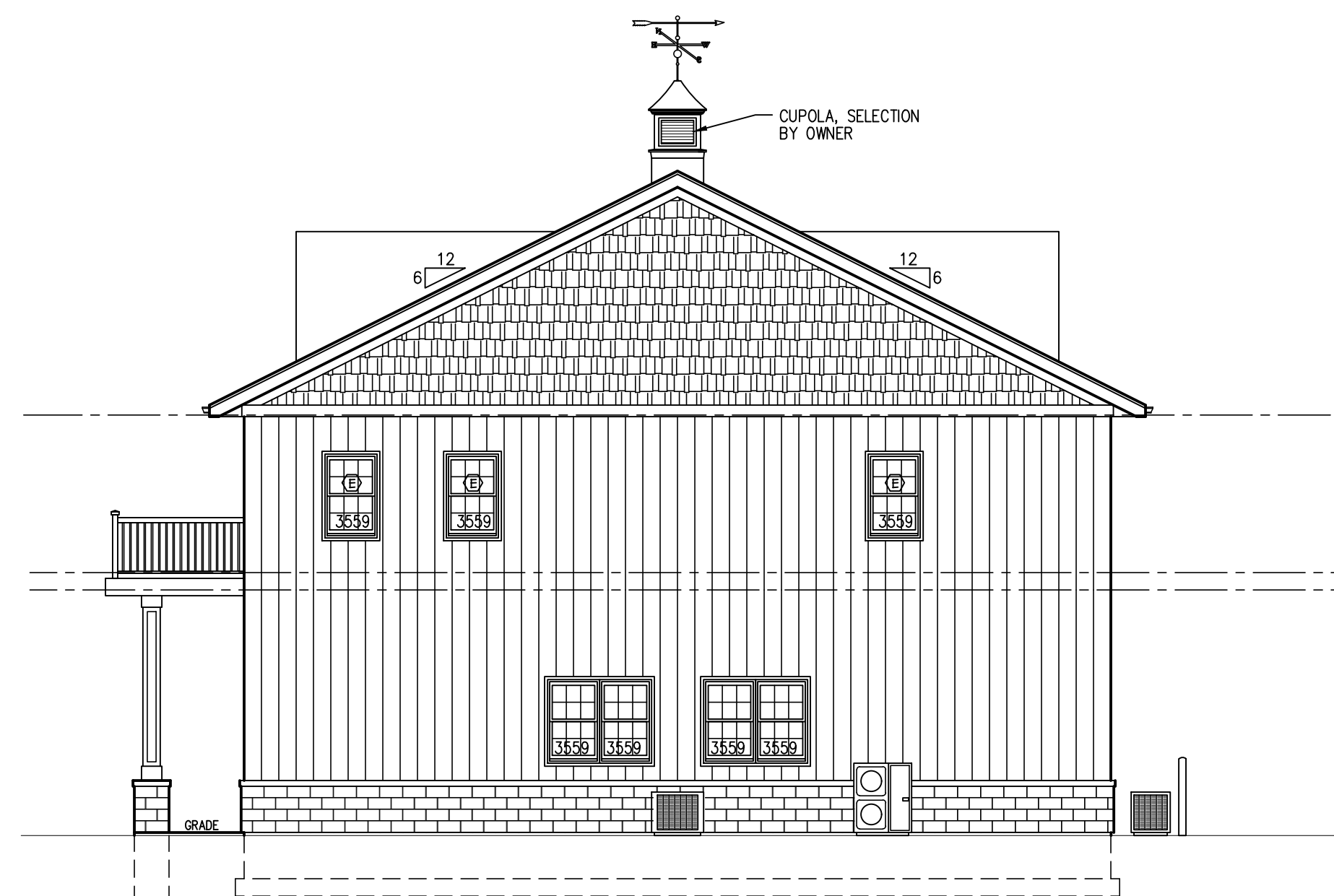
**ROOF PLAN**

1/8" = 1'-0"



**SOUTH ELEVATION**

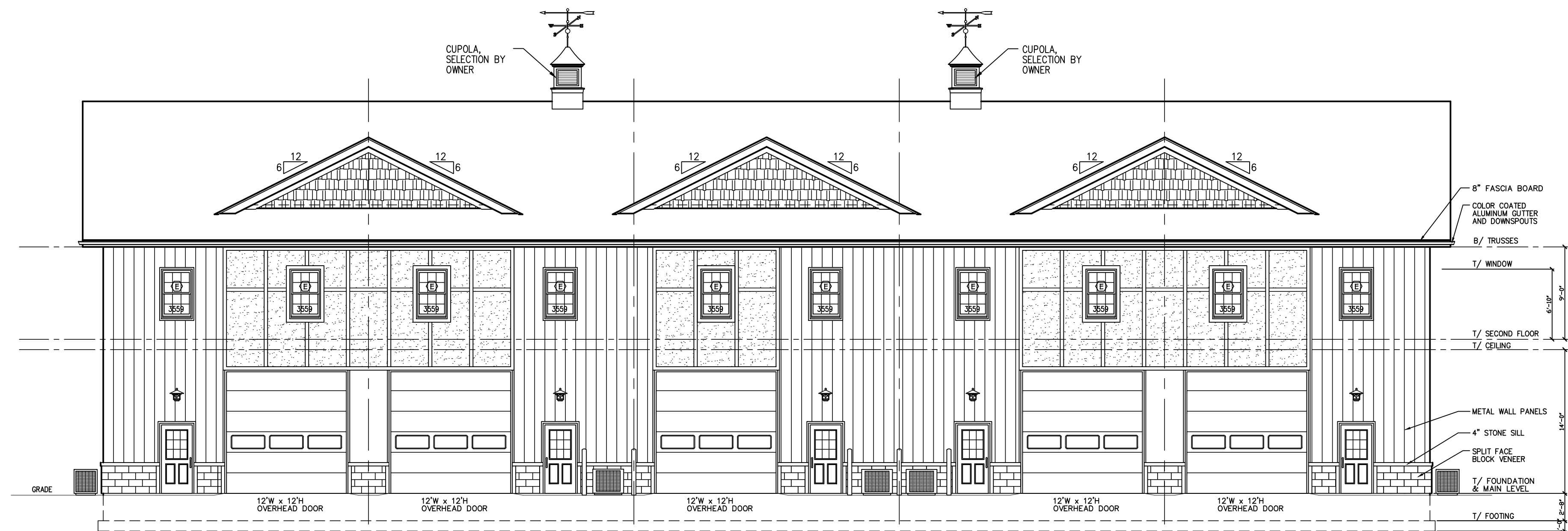
1/8" = 1'-0"



**NORTH ELEVATION**

**NORTH ELEVATION**

1/8" = 1'-0"



**WEST ELEVATION**

**WEST ELEVATION**

1/8" = 1'-0"

- 8" FASCIA BOARD
- COLOR COATED ALUMINUM GUTTER AND DOWNSPOUTS
- 6" TRUSSES
- 1/2" WINDOW
- 1/2" SECOND FLOOR CEILING
- METAL WALL PANELS
- 4" STONE SILL
- SPLIT FACE BLOCK VENEER
- 1/2" FOUNDATION & MAIN LEVEL
- 1/2" FOOTING

FIVE UNIT CONDO BUILDING  
AUTOBAHN COUNTRY CLUB  
3795 CENTERPOINT WAY, JOLIET,  
ILLINOIS 60439

DATE:

EXP. DATE:

REVISIONS

REV # DATE: REV. PER:

DATE:  
05-17-17

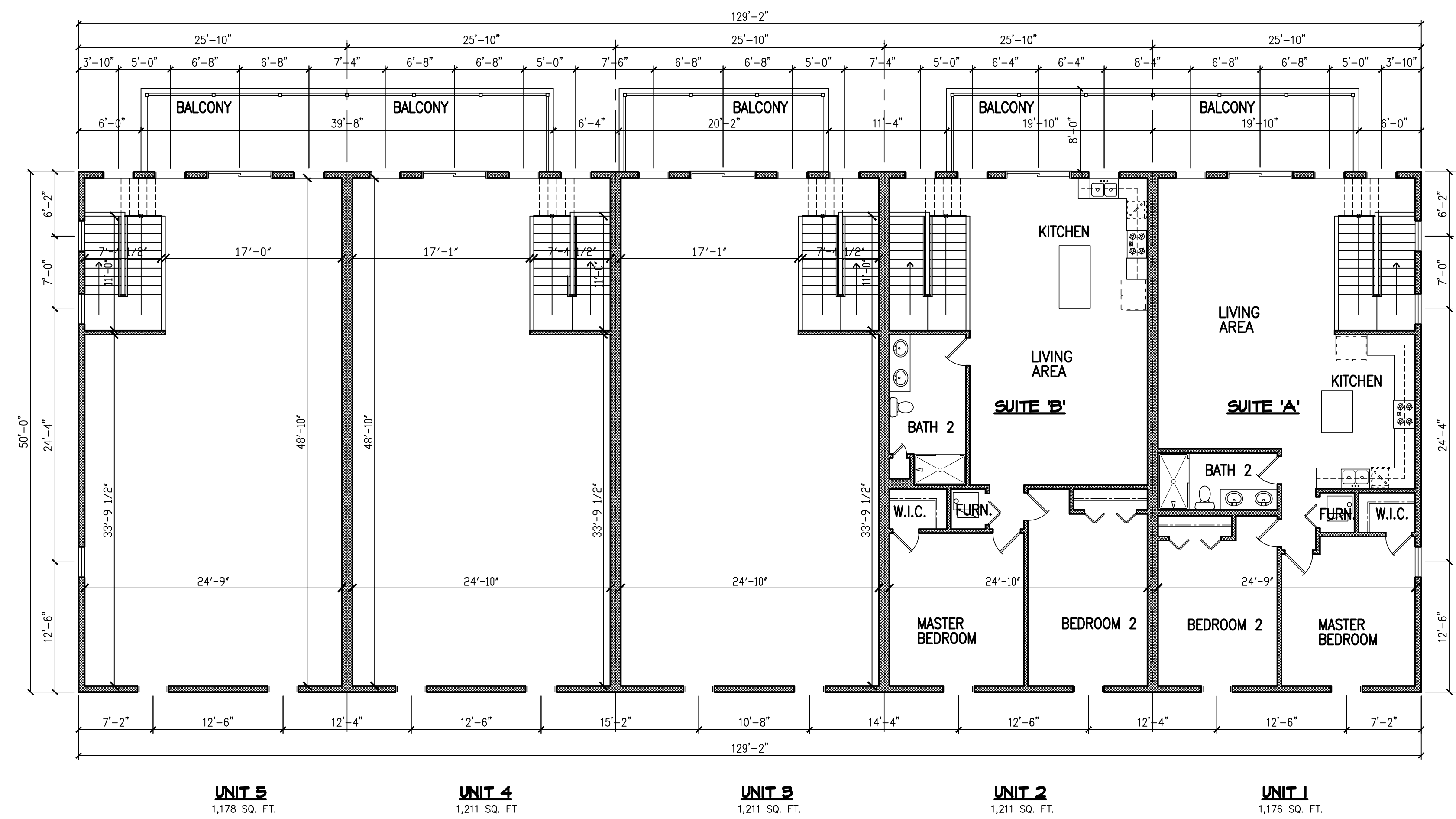
DRAWN BY: MES

PREVIOUS NO.

PROJECT NO.  
17049

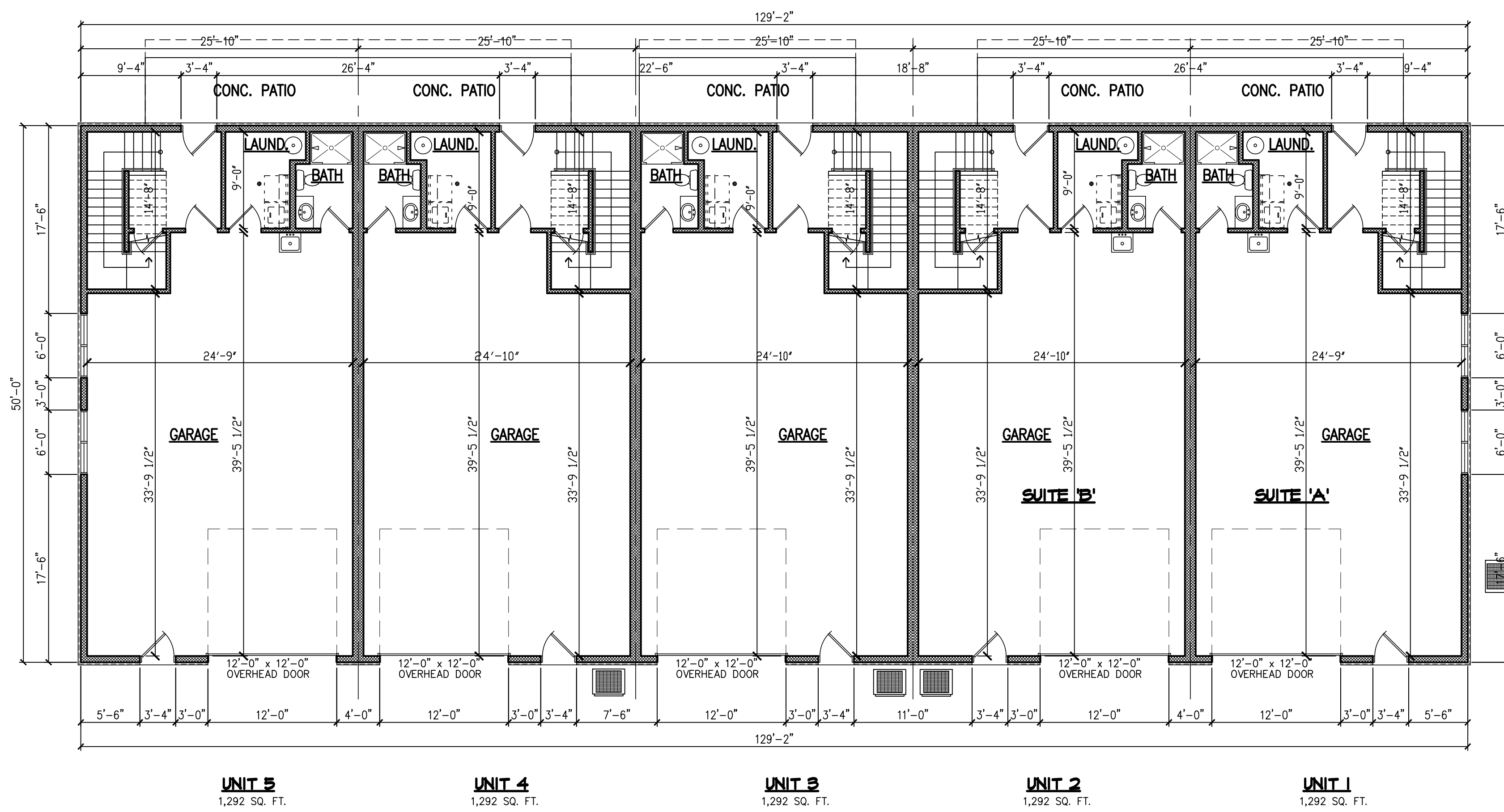
SHEET NUMBER

A-4



SECOND FLOOR PLAN

1/8" = 1'-0"



FIRST FLOOR PLAN

1/8" = 1'-0"



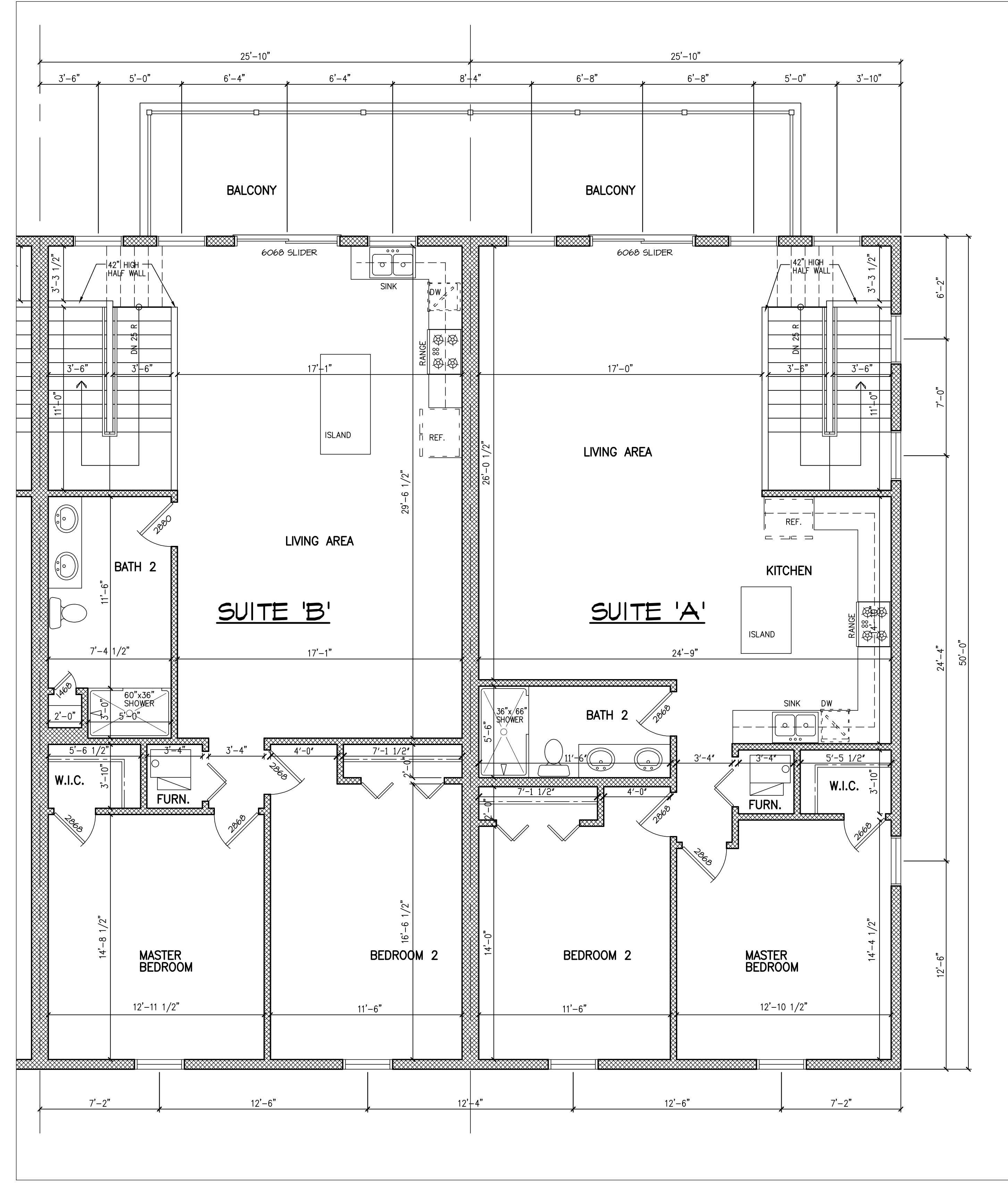
**FIVE UNIT CONDO BUILDING**  
**AUTOBAHN COUNTRY CLUB**  
**3795 CENTERPOINT WAY, JOLIET,**  
**ILLINOIS 60439**

DATE:  
  
EXP. DATE:

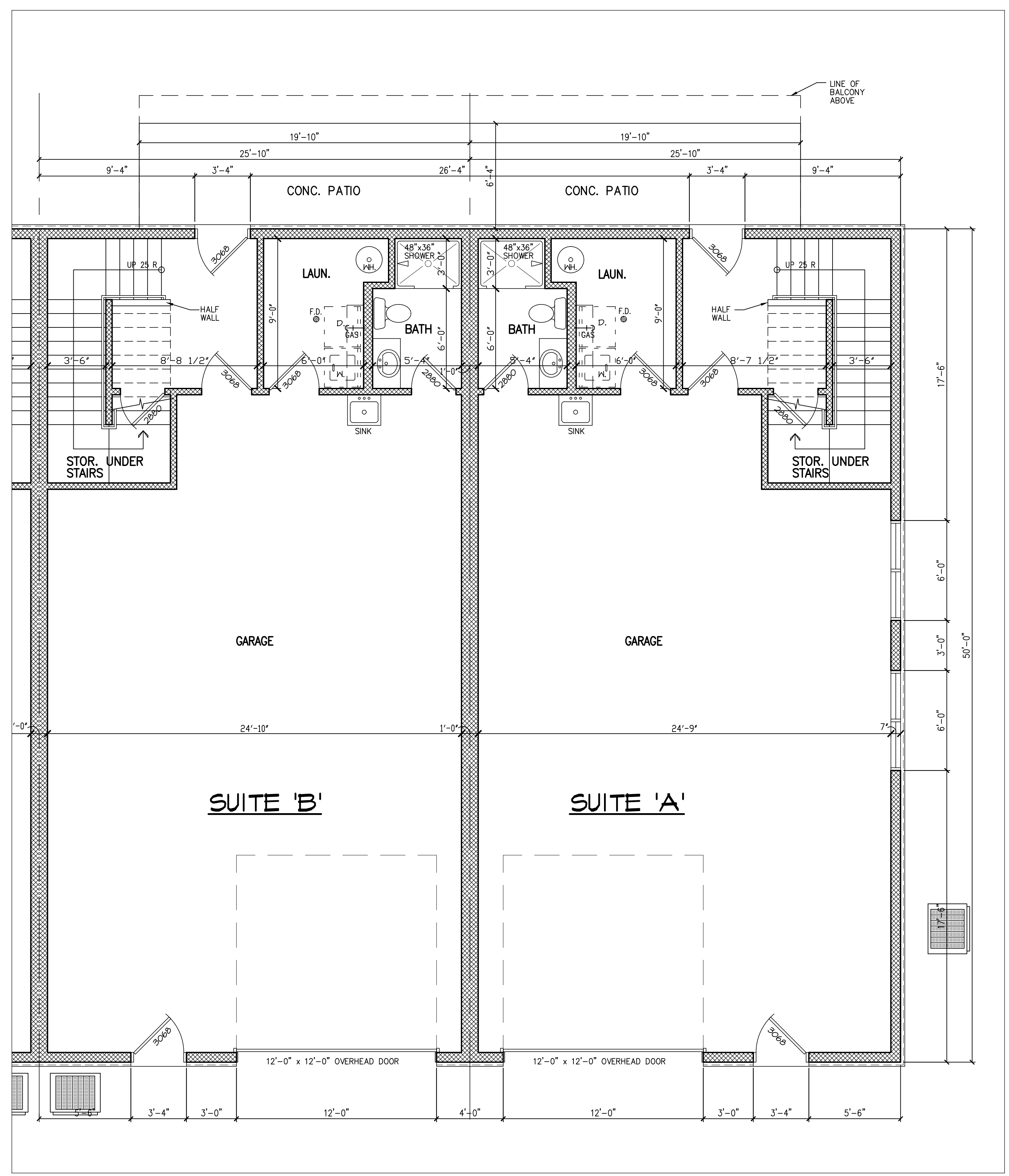
REVISIONS	
REV #	DATE: REV. PER:

DATE:  
**05-17-17**  
DRAWN BY: MES  
PREVIOUS NO.  
PROJECT NO.  
**17049**

SHEET NUMBER  
**A-5**



**SECOND FLOOR PLAN SUITES - 'A' & 'B'** 1/4" = 1'-0"



**FIRST FLOOR PLAN SUITES - 'A' & 'B'** 1/4" = 1'-0"